



Blackpool and The Fylde College

School Leaver Prospectus

September 2022

B&FC's employment-focused qualifications provide the technical and professional skills needed to achieve your higher education and career ambitions.



Welcome to B&FC

one of the most
successful colleges
in the country.

At B&FC, we're dedicated to supporting you to achieve your university and career ambitions. Our courses are co-created with employers and provide relevant industry placements to help you stand out from the crowd. Here at B&FC, you will benefit from cutting-edge facilities, industry specialist tutors and all the support you need.

When you join B&FC you will become part of our community and all it has to offer. A strong support network, personalised learning and an enjoyable journey that gets you where you want to go. We know student life is about more than hard work and studying. It's about making friends and memories that will last a lifetime. From social activities and events to societies and sports, we are a vibrant College with plenty of opportunities so you can make the most of your time with us.

If you'd like to join our community, please apply as soon as you can to reserve a place on your chosen course. We look forward to welcoming you to B&FC.

Philip Grant
Head of 16-19

Contents

- 4** Why choose B&FC
- 5** School leaver options explained
- 6** Diplomas
- 8** T Levels
- 10** Apprenticeships
- 12** Subject choices
- 14** Automotive and Motorsport
- 16** Business and Enterprise
- 18** Catering and Hospitality
- 20** Children, Young People and Families
- 22** Computing and Digital Technologies
- 24** Construction
- 26** Creative Arts, Design and Photography
- 28** Engineering
- 30** Hair, Beauty and Related Therapies
- 32** Health and Medical Professions
- 34** Maritime and Nautical
- 36** Media Production, Film and Television
- 38** Performing Arts and Music
- 40** Public Services (Uniformed)
- 42** Science
- 44** Sport, Leisure and Recreation
- 46** Travel and Tourism
- 48** High-tech facilities
- 50** Enjoy the journey
- 52** Apply now
- 53** All the support you need
- 54** Degree level courses

Top 3%

of colleges in
England for
school leaver
success¹

**Ofsted
Outstanding**
since 2013/14

100%
pass rate

across 12
subject areas

2020/21 Results

Another outstanding
year at B&FC

In 2020/21, B&FC students were celebrating yet again. In no less than 12 subject areas, the pass rate for 16 to 18 year-olds studying a Level 3 Triple Diploma was an amazing 100%. Overall, students achieved a highly impressive pass rate of 98.1%

A Level 3 Triple Diploma is the equivalent to studying 3 A Levels, equipping students for leading university places and highly rewarding careers. This year was no exception, as students progressed to universities across the country, with some continuing their studies at B&FC, which offers degrees awarded by Lancaster University (a UK top 20 university).²

¹National Achievement Rate Tables (NARTs) from the Department for Education & Education and Skills Funding Agency 2018/19 ²The Complete University Guide League Tables 2022

Meet Ellie



“The course wasn’t 100% exams so I felt it was more relaxed compared to sixth form colleges. Teachers have always stood by me and helped me with my work. My course also provided me with the chance to do a placement alongside.”

Applied Science student Ellie Sykes is going on to study Biomedicine at university.

Why choose B&FC



Ofsted Grade 1 Outstanding

This proves our teaching is of the highest standard, providing you with the best technical route through to your future.



Education & Skills Funding Agency

Among the best for success

We're ranked in the top 3% of all colleges in England for school leaver success¹ – why would you go anywhere else?



Leading the way

We're a member of the Chartered Institute for Further Education (CIFE), which brings together the best training providers across the sector.

T-LEVELS

Pioneering T Levels

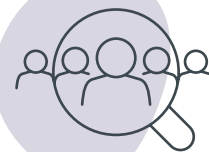
B&FC offers the largest range of T Levels in Lancashire for 2021/2022².

Degrees awarded by



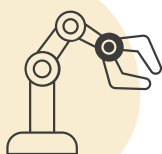
Lancaster University Degree

Successful level 3 students who meet the entry criteria will be guaranteed a place on one of our Lancaster University degrees³.



Employment focused

Our qualifications provide the technical and professional skills needed to confidently equip you for your career.



High-tech facilities

We're constantly investing in our facilities to provide a first-rate industry standard learning environment with cutting edge resources.



Industry specialists

Our tutors are specialists in their subjects and they regularly spend time in industry to keep their knowledge and experience up-to-date.



Relevant industry placements

If you study full-time you can access a relevant industry placement, which develops valuable skills for employment and/or higher level study.

¹National Achievement Rate Tables (NARTs) from the Department for Education & Education and Skills Funding Agency 2018/19 ²As listed on <https://www.tlevels.gov.uk/students/find> ³Applies to successful level 3 students who meet the entry criteria

School leaver options explained

With so many options available once you finish school, it can be confusing knowing what to do. We've explained these different options below so you can decide which one is the right one for you.

In Work

In College

Apprenticeships	T Levels	Diplomas	A-levels
(18 months approx. – 80% work-based; 20% college-based)	(2 years – 20% work-based; 80% college-based)	(2 years – 20-hour industry placement)	(2 years – 100% college-based) Not available at B&FC
What are they?			
Suitable if you...			
...want to start your career straight away and start earning a wage	...are academically strong with high level technical skills and have a specific career goal	...have a strong interest in a specific subject	...are academically strong, keen to do a degree but haven't decided on a career route
Entry requirements			
Ideally hold a relevant position with a local employer and be willing to learn*	5 GCSEs grade 4 and above, including English and maths	4 GCSEs grade 4 and above	5 GCSEs grade 5 and above, including English and maths
Study mode			
20% college-based and 80% work-based (re-take English and maths if necessary)	Core skills, subject knowledge, English and maths and a minimum 315-hour (equivalent to 45 days approx) industry placement	Core skills, subject knowledge, English and maths and a minimum 20-hour industry placement	Core subject only
How you'll be assessed			
Observation, tests and portfolio of evidence	Through exams and practical skills tests	Through exams and practical skills tests	Through exams only
Where do they lead?			
+ Skilled employment + Higher/Degree Apprenticeships Work based degree level qualifications	+ University + Skilled employment + Higher/Degree Apprenticeships	+ University + Skilled employment + Higher/Degree Apprenticeships	+ University

*If you don't have a relevant position, we can support you to find one. Go to blackpool.ac.uk/apprenticeships/vacancies

Diplomas

If you like the sound of fewer exams, a chance to gain industry experience and earning a qualification that employers and universities love, read on...

Level 3 Triple Diplomas

Our Level 3 Triple Diplomas are the equivalent to studying three A Levels. They carry the maximum 168 UCAS points but unlike A Levels they are more assignment based with significant emphasis on industry experience. Depending on your GCSE results, you might need to start off on a Level 1 or 2 course.

What's covered

At B&FC, your study programme is designed to give you a head start on your future career. It covers theory and practical sessions in your chosen subject, regular progress meetings, career planning, employability skills, English and maths at the appropriate level and a relevant industry placement.

What you'll need

For our Level 3 Triple Diplomas, we usually ask for 4 GCSEs at grade 4 or above, including English and maths (depending on your results, you might need to start off

on a Level 1 or 2 course). If you get a grade 3 or below in your English and/or maths you may still gain a place, but you'll need to re-sit these subjects as part of your study programme (but the good news is it won't take you any longer to do it).

Level 2 and 3 Diplomas

Our Level 2 and 3 Diplomas allow you to develop employment-focused knowledge and skills in a variety of career areas. These highly practical programmes feature an industry placement, English and maths development and

100%
pass rate

across 12
subject areas

*Level 3 Triple
Diplomas

SAME
UCAS points
as A Levels

with fewer exams!

*Level 3 Triple
Diplomas

the opportunity to progress to a higher level or even onto an apprenticeship. Our Level 2 courses only last one year and allow you to build up a strong foundation of knowledge in your subject area of choice. Depending on your GCSE results and subject choice, such as some of our trade courses, you may need start off on a Level 1 course.

What are you waiting for?

blackpool.ac.uk/leavers



Meet Emily

Former St George's student Emily explains why she chose B&FC to help her begin the journey to an engineering career in the RAF.

"The College just had better facilities and a bigger selection of what you could do. And it's a really good timetable – I just recently started a job so it works out well.

It's more hands on and less stressful than A Levels and you've not got an exam at the end. I just feel like you can showcase your knowledge in assignments more.

There are probably girls out there who are thinking about doing engineering and worried there aren't going to be many girls there. But they should just do it. We've all been really close as a group."

Emily Grace-Bolton Electrical and Electronic Engineering – Level 3 Triple Diploma

T Levels

If you're academically strong but you have a skilled career route in mind, a T Level will give you a head start into your chosen industry.

T Levels are a new 2-year qualification that lead to university, skilled employment and higher/degree apprenticeships. They've been designed with employers and businesses to provide the skills that industry needs, which means you get to play a key part in shaping the future of the UK economy!

Why do a T Level?

A T Level is equivalent to doing three A Levels, but along with the 168 UCAS points needed for university you'll develop high level technical skills via a relevant 315-hour industry placement. That means around 20% of your time is spent in industry, getting real on-the-job experience for your future career.

What's covered

Along with your industry placement, relevant theory and practical sessions will ensure you develop the exact knowledge and skills needed to succeed in your chosen industry.

Your T Level is also made up of regular progress meetings, career planning, employability skills, and English and maths at the appropriate level.

What about assessment?

You'll be pleased to know it's not all exams either – you'll also have skills tests. These will combine to give you an overall grade of pass, merit or distinction.

What you'll need

5 GCSEs at grade 4 or above, including English and maths.

What are you waiting for?
blackpool.ac.uk/leavers

80%
class-based

20%
Industry

Regional Pioneers!

B&FC offers the most T Levels in the North West*

In 2022, B&FC will be offering 14 T Levels, you can choose from:

- + Digital
- + Construction
- + Business and Finance
- + Education and Childcare
- + Health
- + Science
- + Engineering

*As listed on tlevels.gov.uk/students/find.



Meet Owen

Owen who went to Hodgson Academy is loving his T Level course and is building his future in construction.

"Construction is my passion. The course is really informative and the tutor support is unbelievable. I chose the T Level Construction at B&FC because it's not just zooming in at one specific type of work. The course focuses on a variety of different things such as surveying, architecture, CAD and many more interesting subjects.

This course has allowed me so many opportunities and has given me time to really think what I want to do in the construction world. The staff are nice and friendly. It's the perfect course for me!"

Owen Preston

T Level Design, Surveying and Planning (Construction)

Apprenticeships

**Want to earn and learn at the same time?
If you're keen to start your career straight
away, an apprenticeship could be for you.**

An apprenticeship is the best of both worlds; you can start paid employment and work towards a nationally-recognised qualification at the same time. You'll be earning a wage for doing a real full-time job, learning skills in a real work environment. Most of your training is 'on-the-job', however 20% of your apprenticeship (equivalent to one full day a week) will be 'off-the-job'.

Rated 19th



80%
work-based

20%
college-based

What to expect

An apprenticeship usually takes around 18 months to complete. Learning is mostly hands on but 'off-the-job' training might include regularly or occasionally attending College. English and maths (at the relevant level) is also included. Assessment is by a combination of work observations, tests and a portfolio of evidence.

Why B&FC?

The great thing about an apprenticeship is that it's personalised to you and based on your unique abilities and career goals.

You'll also get lots of support from your own personal skills coach. Afterwards, you could continue to the next level, maybe doing a degree or higher apprenticeship (a degree-level qualification that your employer pays for you to do at work).

What you'll need

You should have a passion for your subject and be willing to learn. Ideally, you'll also need a relevant position but if you don't have one, we can support you to find the right role. We might recommend doing a traineeship or a full-time course first, as this

can help you to develop the experience, skills and qualities that employers look for.

Traineeships

Want to get ready for an apprenticeship? A traineeship may be the perfect option! Designed for young people who don't have the appropriate skills or qualifications, traineeships last from 6 weeks up to 1 year, though most traineeships last for less than 6 months. You can start a traineeship before September and get a head start to set you on the right path.



Meet Abbie

Abbie is six months into her healthcare apprenticeship with Lancashire and South Cumbria Foundation Trust.

"The course so far has been amazing and I'm so excited to learn more, my tutor is amazing too and always there to help. The apprenticeship is giving me the opportunity to access the job I've always wanted to do and prosper in my future.

In my short time of working on the ward, I'm proud of the many things I've accomplished. My biggest achievement is being a finalist for the Rising Star Award at the National Apprenticeship Awards. I'm also very proud of the positive impact I've had on service users I've cared for. My dream is to become a qualified nurse and make a positive impact on as many people's lives as I can."

Abbie Greenwood

Healthcare Support Worker Advanced Apprenticeship

Subjects Available

- + Accounting
- + Building and Construction
- + Engineering
- + Catering and Food Manufacturing
- + Hair and Beauty Therapies
- + ICT
- + Automotive
- + Business Studies
- + Care, Welfare and Education

We proudly work with...



See our full list of apprenticeships at
blackpool.ac.uk/apprenticeships

Come and visit the Apprenticeships Team at one of our Open Events or contact us on 01253 504 326
or apprenticeships@blackpool.ac.uk

Subject choices

Automotive and Motorsport

The North West is the UK's second biggest region for automotive manufacture. Opportunities also exist in service and repair or even working for a motorsport team.

Career Routes:

- + **Vehicle Technician**
- + **Motor Vehicle Fitter**
- + **Motorsport Engineer**

Employer partners:



Business and Enterprise

Lancashire's financial and professional services sector supports more than 5,000 businesses, from accountants through to large business process outsourcing organisations.

Career Routes:

- + **Business Manager**
- + **Accountant**
- + **Project Manager**

Employer partners:



Catering and Hospitality

The Fylde Coast is renowned for its expertise in the catering and hospitality industry. We deliver the skills, knowledge and experience needed for when the economy springs back.

Career Routes:

- + **Head Chef**
- + **Craft Baker**
- + **Hospitality Supervisor**

Employer partners:



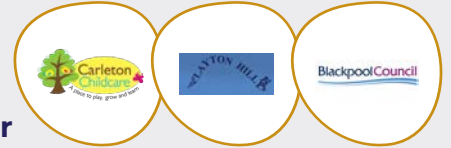
Children, Young People and Families

The childcare sector supports rewarding careers in nurseries and primary schools with additional study and training facilitating the move into management or teaching.

Career Routes:

- + **Support Worker**
- + **Early Years Teacher**
- + **Early Years Practitioner**

Employer partners:



Computing and Digital Technologies

The North West is home to an increasing number of technology companies, with opportunities also available in organisations across all industries using IT.

Career Routes:

- + **Games Programmer**
- + **Software Developer**
- + **Web Developer**

Employer partners:



Construction

Lancashire's thriving construction industry is driven by major commercial and residential developments, supported by top employers as well as thousands of small companies.

Career Routes:

- + **Project Manager**
- + **Quantity Surveyor**
- + **Joiner**

Employer partners:



Creative Arts, Design and Photography

The creative and digital sector in Lancashire accounts for 6% of the workforce and there are increasing opportunities in areas such as graphic design, fashion design, and photography.

Career Routes:

- + **Graphic Designer**
- + **Art Director**
- + **Photographer**

Employer partners:



Engineering

Lancashire is one of the UK's leading areas for advanced manufacturing and engineering. A current skills shortage means there are excellent career opportunities available.

Career Routes:

- + **Electrical Engineer**
- + **Aerospace Engineer**
- + **Manufacturing Engineer**

Employer partners:



Hair, Beauty and Related Therapies

The hair and beauty industry is experiencing a growth period and exciting opportunities exist with major salons and spas, in product retail and in the film/TV industries.

Career Routes:

- + **Hairdresser**
- + **Beauty Therapist**
- + **Nail Technician**

Employer partners:



Health and Medical Professions

Health and social care is Lancashire's largest employment sector, employing 16% of the workforce. A rising demand for services is creating a range of employment opportunities.

Career Routes:

- + **Nurse**
- + **Paramedic**
- + **Midwife**

Employer partners:



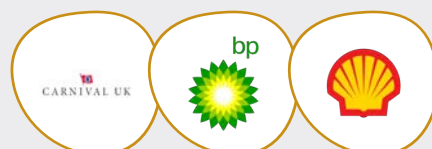
Maritime and Nautical

The maritime sector offers a range of exciting careers both at sea and ashore, with generous benefits and starting salaries as high as £35,300.

Career Routes:

- + **Merchant Navy Deck/Engineering Officer**
- + **Electro-Technical Officer**

Employer partners:



Media Production, Film and Television

The North West offers increasing opportunities in this field, with key clusters such as MediaCityUK home to 755 companies specialising in technology, media and telecoms activity.

Career Routes:

- + **AV Equipment Operator**
- + **Online Content Producer**
- + **Camera Operator/Editor**

Employer partners:



Performing Arts and Music

We equip tomorrow's talent with the skills, knowledge and experience needed for when the music and entertainment industry springs back to life.

Career Routes:

- + **Actor**
- + **Musician**
- + **Director**

Employer partners:



Public Services (Uniformed)

There are more jobs available in public services than any other career path in the North West, with good salaries, progression and job security the norm.

Career Routes:

- + **Police Officer**
- + **Army/Naval Officer**
- + **Firefighter**

Employer partners:



Science

Scientists are among the most highly paid professionals in the North West and over the next decade, R&D investment in life sciences will create 3,200 skilled jobs.

Career Routes:

- + **Biomedical Scientist**
- + **Veterinary Nurse**
- + **Forensic Scientist**

Employer partners:



Sport, Leisure and Recreation

The North West has a vibrant sports heritage, for Premier League football in particular. Consequently, talented physiotherapists, nutritionists and fitness coaches are in high demand.

Career Routes:

- + **Leisure Manager**
- + **Exercise Scientist**
- + **Sports Coach**

Employer partners:



Travel and Tourism

We deliver the skills, knowledge and experience needed for when Lancashire's visitor economy and Britain's most popular seaside resort – Blackpool – spring back to life.

Career Routes:

- + **Resort Representative**
- + **Travel Influencer**
- + **Air Cabin Crew**

Employer partners:



Automotive and Motorsport

Bispham Campus

Career Opportunities

Get set on the road to an exciting and rewarding career in the automotive industry. Join an innovative and industry focused course taught by specialists in our cutting edge Advanced Technology Centre. Past students have gone on to build bright careers with industry leaders such as Jaguar Land Rover, Ford Motor Company, Bentley, Lotus, M-Sport, Westfield Sportscars and MAHLE Powertrain.

Popular career routes

- + Vehicle Technician
- + Motor Vehicle Fitter
- + Motorsport Engineer

Meet Ben

Ben Armstrong Motor Vehicle Maintenance and Repair



“I chose B&FC for its professionalism and up-to-date facilities. The support I have received from tutors has been amazing - they will always go the extra mile to help if you ask! Now I am continuing here to do my degree and carry on a role with Yamaha.”

Industry-ready

B&FC has amazing industry placements with key Lancashire employers such as the Vella Group, Blackpool Transport, Bowker Motorrad and Arnold Clark. We are also the lead training provider for Ford's apprentices in the North West.

North West careers data courtesy of Northern Alliance and EMSI

North West job facts

Jobs: **5,253**

Openings per year: **409**

Average Salary: **£24,500**





Your options

Subjects Available

- + Motor Vehicle Maintenance and Repair
- + Motorsport
- + Vehicle Accident Repair
- + Vehicle Body Repair and Paint
- + Vehicle Fast Fit Technician
- + Vehicle Inspection

Study Mode

- Level 2 Diploma
- Level 3 Diploma
- Level 3 Triple Diploma
- Apprenticeships

Get hands on with our
very own BMW rally Mini



Formula Renault
at Oulton Park



Visit from luxury carmakers
Bentley Motors



“Our industry placements support
B&FC students’ progression
and development and they also
benefit us as an employer.”

Steve Wilson, BMW Bowker Motorrad

See our full list
of courses at
blackpool.ac.uk/leavers

Applying is easy!

Read our applying guide
on **page 52**

Business and Enterprise

Bispham Campus

Career Opportunities

Want to get down to business? Studying business at B&FC will help you develop the skills and experience that will open doors to a wide range of career options. Whether you want to go straight into employment, get ready for higher education or even start your own business. You'll always be in demand with business and enterprise skills being a real value to employers in any workplace.

Popular career routes

- + Business Manager
- + Accountant
- + Project Manager

Meet Jake

Jake Reed Level 3 Extended
Diploma Business Management



"Joining the business course at B&FC was one of the best decisions I've made. As soon as I joined I had plenty of support and the feedback needed to get the highest grade possible. My time here has really helped me find a career path I'm sure of. Experiences like starting a company with classmates have helped me gain a better understanding of the skills I have whilst also developing me as a person."

Industry-ready

B&FC has amazing industry placements with key Lancashire employers such as Rock FM, Karma Applied Science, NHS, Blackpool Transport and Wyre Council.

North West job facts

Jobs: **308,991**

Openings per year: **19,649**

Average Salary: **£31,100**

NHS

**Blackpool
Transport**

**wyre
council**

North West careers data courtesy of Northern Alliance and EMSI

100%
pass rate



Your options

Subjects Available

- + Accountancy
- + Business
- + Business Management
- + Business Management and Administration
- + Customer Service
- + Finance
- + HR
- + Skills for Business (Enterprise)

Study Mode

- T Level
- Level 2 Diploma
- Level 3 Diploma
- Level 3 Triple Diploma
- Apprenticeships

Students launch their own software company



Extra support through assignment workshops



Nearly 75% of students progress to B&FC degrees



“B&FC’s tutors have a very positive and flexible approach, which is supportive of the needs of the individual students and our business.”

Annie Ogilvie, Blackpool Transport

See our full list of courses at
blackpool.ac.uk/leavers

Applying is easy!
Read our applying guide on **page 52**

Catering and Hospitality

Bispham Campus

Career Opportunities

Learn the key ingredients for a successful career in the catering and hospitality sector. Employment opportunities in this sector are endless, with progression routes which could take you to the very top of the industry. The Fylde Coast is renowned for its expertise in the catering and hospitality industry, producing workers and managers who have gone on to leading positions around the world.

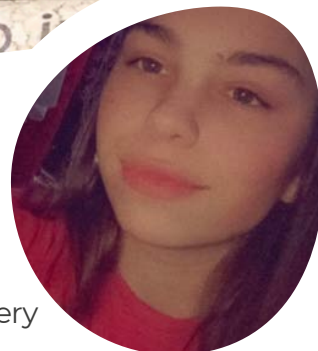
Popular career routes

- + Head Chef
- + Craft Baker
- + Hospitality Supervisor

Meet Kateland

Kateland Milton

Level 3 Diploma in Professional Bakery



“ My tutors are always there to help me out through the things I struggle with the most, no matter what they will always find another way to help. They give you support and advice and will always try their hardest for you. In the future I want to open a bakery with my best friend.”

Industry-ready

B&FC has amazing industry placements with key Lancashire employers such as Ribby Hall Village, Northcote, Twelve, Campbell & Rowley Events and Greenhalghs Craft Bakery.

North West job facts

Jobs: **71,482**

Openings per year: **5,004**

Average Salary: **£20,650**

northcote

RIBBY HALL VILLAGE

TWELVE

North West careers data courtesy of Northern Alliance and EMSI



Your options

Subjects Available

- + Culinary Skills
- + Food and Beverage Service Supervision
- + Professional Bakery
- + Professional Cookery (Preparation and Cooking)
- + Professional Food and Beverage Service Skills

Study Mode

- ☒ Level 2 Diploma
- ☒ Level 3 Diploma
- ☒ Apprenticeships

Scooping first place in the annual Skills Clash



WW1 centenary cupcakes raise cash for the Royal British Legion



Mocktail demos at Blackpool Pleasure Beach



"I'd strongly advise anyone thinking of a catering career to come to B&FC. Start here at the college - it can take you to great places."

Paul Rowley, Campbell & Rowley Events

See our full list of courses at **blackpool.ac.uk/leavers**

Applying is easy!

Read our applying guide on **page 52**

Children, Young People and Families

Bispham Campus

Career Opportunities

Want to make a difference to the next generation? Start a rewarding career in the childcare sector. Popular settings include nurseries, children's centres and primary schools. You could become a self-employed childminder, a nanny or even a children's holiday rep. Go on to study at degree level and you can move into management or early years teaching. Whatever area you decide to specialise in, our courses will help you take the first step into a fulfilling career in childcare.

Popular career routes

- + Early Years Practitioner
- + Support Assistant
- + Early Years Teacher

Meet Ricci

Ricci Ashpool

T Level Assisted Teaching



“Doing this T Level means being able to do what I love. The course is very good and we get to do exciting group work. It feels like one big friendship group here and the tutors are amazing. Placements are amazing too and they give you chance to be more hands on. In the future I want to go to university and get a job as a teaching assistant.”

Industry-ready

B&FC has amazing industry placements with Lancashire employers such as Sacred Heart Preschool, Carleton Childcare, Treetops, Layton Hill Nursery and Blackpool Children's Centres.

North West job facts

Jobs: **7,340**

Openings per year: **471**

Average Salary: **£21,500**



North West careers data courtesy of Northern Alliance and EMSI



Your options

Subjects Available

- + Early Years and Young People Practitioner
- + Early Years Education
- + Education and Childcare
- + School Teaching

Study Mode

- T Level
- Level 2 Diploma
- Apprenticeships

Volunteer trip
to Vietnam



Prepare for industry placement
in our early years suite



Learn important
practical skills



“Our placement student has worked well alongside the children and practitioners and has now been offered a permanent role, which speaks volumes about her performance.”

Elizabeth King, Layton Hill Nursery

See our full list
of courses at
blackpool.ac.uk/leavers

Applying is easy!

Read our applying guide
on **page 52**

Computing and Digital Technologies

Bispham Campus

Career Opportunities

Log into your future with a career in computing. As one of the fastest growing industries, exciting and vast career opportunities await! You can expect a high average salary and quick career progression. Whether you want to create games people love, learn programming, web development or cyber security, you'll gain the skills needed to join the digital revolution and develop a rich career.

Popular career routes

- + Software Developer
- + Network Engineer
- + Web Developer

Meet Eloy

Eloy Gun

T Level Computing



"I was attracted to the 315-hour work placement with T Levels and small class sizes. All the rooms and equipment are quality, we get to use the servers and different software. I have a placement booked with Digitav that I'm looking forward to. I plan to go to university and do a job I enjoy such as programming, game development or software engineering."

Industry-ready

B&FC has amazing industry placements with Lancashire employers such as Yellowphin – Web Design and Development, Blackpool Council, Fox's Biscuits, AWOL Media and Charles Saer Community Primary School.

North West job facts

Jobs: **24,338**

Openings per year: **1,260**

Average Salary: **£38,590**



North West careers data courtesy of Northern Alliance and EMSI



Your options

Subjects Available

- + Computing with Programming, Games Development and Cyber Security
- + Digital and Games Development
- + Digital Business Services
- + Digital Marketing
- + Digital Production, Design and Development
- + Digital Support Services

Study Mode

- T Level
- Level 2 Diploma
- Level 3 Triple Diploma
- Apprenticeships

Amazing range of virtual and augmented reality devices



Game design Skills
Clash winners



Cisco certified
instructors



"Partnering with B&FC has been great. We gain eager students who are willing to expand their knowledge and skills, who provide a new perspective on tasks and problems."

Yellowphin - Web Design and Development

See our full list
of courses at
blackpool.ac.uk/leavers

Applying is easy!

Read our applying guide
on **page 52**

Construction

Bispham Campus

Career Opportunities

Build the foundations for a successful career in construction. If you're looking to learn skills that are in high demand and enjoy getting hands on, a career in construction could be for you. Our wide range of construction programmes will set you up with skills for life and equip you with the tools to progress in your chosen area. We've recently invested £1 million in our Construction Skills Centre so you'll be learning in cutting-edge industry standard facilities.

Popular career routes

- + Project Manager
- + Quantity Surveyor
- + Joiner

Meet Jamie

Jamie Peel T Level Construction
(Design, Surveying and Planning)



"I've learnt about the industry, it's really interesting, even just the amount of different job roles you have access to. I've been on a structural engineer placement at Hermolle Associates for a year, I started early, and they are keeping me on for a bit. If you know you want to be in construction in some way, this is the best course. You learn about the processes of what goes on in day-to-day construction."

Industry-ready

B&FC has amazing industry placements with key Lancashire employers such as Willmott Dixon, New Look Construction Limited, Bambers Remedial Contractors, Marcus Worthington and Wyre Council.

North West job facts

Jobs: **59,083**

Openings per year: **4,648**

Average Salary: **£26,300**



North West careers data courtesy of Northern Alliance and EMSI

100%
pass rate

Your options

Subjects Available

- + Bench Joinery / Site Carpentry / Carpentry and Joinery
- + Bricklaying / Brickwork
- + Design, Surveying and Planning (Construction)
- + Electrical Installation / Electrotechnical Engineering
- + Painting and Decorating
- + Plastering
- + Plumbing / Plumbing and Heating
- + Property Maintenance
- + Trowel

Study Mode

- T Level
- Level 1 Diploma
- Level 2 Diploma
- Level 3 Diploma
- Apprenticeships



Winter Gardens'
restoration project



Creating Santa's Grotto for
Blackpool Carers' Centre



Team-building at Blackpool's
Escape Room



"The people we engage with at the college are first rate, the staff are committed to improving the opportunities for their students."

Richard Wright, Wilmott Dixon Construction Limited

See our full list
of courses at
blackpool.ac.uk/leavers

Applying is easy!

Read our applying guide
on **page 52**

Creative Arts, Design and Photography

University Centre

Career Opportunities

Picture yourself as a future creative? With creative and digital businesses totalling 4,500 across Lancashire, this is an exciting sector with a diverse range of careers. At B&FC you will have access to industry standard facilities and a unique creative environment with contemporary studios, think spaces and a stunning public gallery. You'll be free to let your imagination get to work and explore your passion for the arts.

Popular career routes

- + Graphic Designer
- + Art Director
- + Photographer

Meet Libby

Libby Austin Level 3 Extended Diploma Art and Design



“I looked at other colleges but this was the perfect course for me so I couldn't possibly choose anywhere else! The tutors show you how to do something and then leave you to it, so you get to do everything yourself and be independent. I really want to go to university so this course and what I'm learning is helping me get there!”

Industry-ready

B&FC has amazing industry placements with key Lancashire employers such as Yellowphin – Web Design and Development, Blackpool Council, YMCA, GB Music and Print Plus.

North West job facts

Jobs: **15,271**

Openings per year: **1,144**

Average Salary: **£31,100**

North West careers data courtesy of Northern Alliance and EMSI



Blackpool Council



100%
pass rate



Your options

Subjects Available

- + Art and Design
- + Graphic and Digital Design
- + Media Production and Technology
- + Photography

Study Mode

- Level 2 Diploma
- Level 3 Diploma
- Level 3 Triple Diploma

Behind the scenes of fashion magazine Dazed



State-of-the-art studios and darkrooms



Regular exhibitions in our beautiful public gallery



“We are so happy to work with students from B&FC, across year groups and disciplines. They are the dancers, artists, producers, technicians, designers, and directors of the future.”

Lightpool Festival

See our full list of courses at
blackpool.ac.uk/leavers

Applying is easy!

Read our applying guide on **page 52**

Engineering

Bispham Campus

Career Opportunities

Ready to engineer your future? B&FC's Engineering department is the only one in Lancashire judged as Grade 1 Outstanding. Whether you see yourself as an aeronautical, electrical, mechanical or manufacturing engineer, our programmes will help you develop the skills and experience to progress. The increased need for skilled engineers across all industry sectors means there are excellent career opportunities. Engineering attracts the highest salaries for graduates and is consistently among the highest paid professions in the UK and internationally.

Popular career routes

- + Manufacturing Engineer
- + Aerospace Engineer
- + Electrical Engineer

Meet Carly

Carly Dewett Level 3 Extended
Diploma Engineering



"I looked at other colleges but none of them offered the practical aspect. I've had a lot of support and encouragement from tutors being a woman on a STEM course which is great. It's such a high standard College and I really enjoy the practical side of the course, one of my favourite things has been the welding. I'm really interested in aerospace engineering, my big goal is to become a pilot with the RAF."

Industry-ready

B&FC has amazing industry placements with key Lancashire employers such as BAE Systems, Westinghouse Springfields, EDF Energy, Airbus and Victrex.

North West job facts

Jobs: **28,662**

Openings per year: **1,769**

Average Salary: **£35,600**

North West careers data courtesy of Northern Alliance and EMSI



100%
pass rate

Your options

Subjects Available

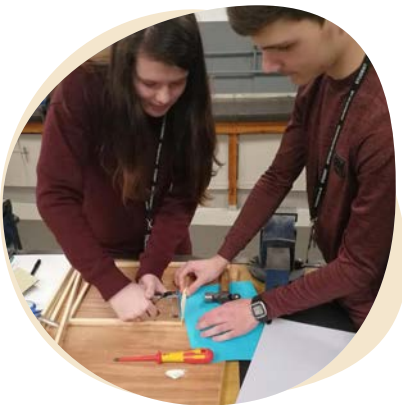
- + Aeronautical Engineering
- + Electrical and Electronic Engineering
- + Engineering
- + Engineering Operations
- + Engineering Technician
- + Engineering Maintenance
- + Fabrication
- + Manufacturing Engineering
- + Mechanical Engineering
- + Welding

Study Mode

- ☐ T Level
- ☐ Level 2 Diploma
- ☐ Level 3 Diploma
- ☐ Level 3 Triple Diploma
- ☐ Apprenticeships



Skills Clash winners
in action



Building a WW1 model tank for
centenary celebrations



The latest CNC technology
in our Advanced workshops



“Much of Springfields’ engineering workforce qualified through programmes at B&FC and we see the benefit of a local college providing quality learning opportunities.”

Keith Tidmarsh, Westinghouse Springfields

See our full list
of courses at
blackpool.ac.uk/leavers

Applying is easy!
Read our applying guide
on **page 52**

Hair, Beauty and Related Therapies

Bispham Campus

Career Opportunities

Want to be a cut above the rest? You'll always look your best with the skills you develop at B&FC. Our industry specialists will help you develop the technical and professional skills needed for career success. Using the industry's latest technologies and products, our commercial salons will provide you with amazing opportunities to work with real clients! You could go on to own your own business or enjoy a rewarding career with a major salon, work on board cruise ships or within the film and TV industry.

Popular career routes

- + Hairdresser
- + Beauty Therapist
- + Nail Technician

Meet Eloise

Eloise Thompson Level 3 Hair, Beauty and Related Therapy



“ I've always enjoyed make-up. I switched from a different college but I've made friendships here that have blossomed, it's lovely. Tutors are supportive and will sit down and talk you through anything you don't understand. I love that we can actually treat clients while we're here!”

Industry-ready

B&FC has amazing industry placements with key Lancashire employers such as Wella Professionals, Elemis, SteinerRecruitment, Huntsman Male Grooming Lounge, Ribby Hall Spa and Stanley House Hotel & Spa.

North West careers data courtesy of Northern Alliance and EMSI

North West job facts

Jobs: **4,969**

Openings per year: **657**

Average Salary: **£17,500**





Your options

Subjects Available

- + Barbering
- + Beauty Therapy
- + Hair and Media Make-up
- + Hair Services
- + Hairdressing
- + Ladies Hairdressing
- + Make-up (Theatrical - Special Effects and Hair and Media)
- + Nail Services
- + Nail Technologies

Study Mode

- ☒ Level 2 Diploma
- ☒ Level 3 Diploma
- ☒ Apprenticeships

A day out at
Pro Hair Live



Students' 'Fantasy' creation
wins second place



Huntsman team visit College to
demo male grooming skills



“ We are looking forward to working in partnership with B&FC to develop students' skills and knowledge in readiness for sustainable employment.”

Elemis

See our full list
of courses at
blackpool.ac.uk/leavers

Applying is easy!

Read our applying guide
on **page 52**

Health and Medical Professions

Bispham Campus

Career Opportunities

Want a career where you feel you can make a real difference? If you're passionate about helping people live healthier and happier lives, a career in the medical profession could be for you. Careers in this sector are some of the most rewarding and fulfilling you can pursue. Our employment-focused programmes benefit from strong partnerships with local health and social care providers, delivering valuable professional skills and experience, setting you on the path to a healthy career.

Popular career routes

- + Nurse
- + Paramedic
- + Midwife



Meet Mason

Mason Stanley

T Level Health



"I chose T Levels because it gives you extra skills to go on to university courses. We do skills development and the teaching is very interactive. I have placements with a care home and Blackpool Victoria Hospital. I'm also a T Level rep for Healthcare, I meet with the tutors and feedback to them how the course is performing. After I finish my T Level I want to go and do a degree in paramedic science."

Industry-ready

B&FC has amazing industry placements with key Lancashire employers such as Blackpool Teaching Hospitals NHS Foundation Trust, Blackpool Council, Warren Manor, Annacliffe Residential Care Home and Bispham Gardens.

North West job facts

Jobs: **91,529**

Openings per year: **6,590**

Average Salary: **£31,700**



North West careers data courtesy of Northern Alliance and EMSI

100%
pass rate

Your options

Subjects Available

- + Health
- + Health Practitioner
- + Health, Social Care and Behaviour Management
- + Adult Care
- + Management
- + Midwifery Professional Practice
- + Nursing Professional Practice
- + Paramedic Professional Practice
- + Social Work Professional Practice
- + Understanding Mental Health

Study Mode

- T Level
- Level 2 Diploma
- Level 3 Diploma
- Level 3 Triple Diploma
- Apprenticeships



A fantastic healthcare
training room

Up to 12 weeks' healthcare
industry experience

Industry specialists provide
career insights



"Blackpool Teaching Hospitals enjoys an excellent partnership with B&FC and we have provided fantastic opportunities for those wanting to work in the health sector."

Eleanor McManus, Blackpool Teaching Hospitals
NHS Foundation Trust

See our full list
of courses at
blackpool.ac.uk/leavers

Applying is easy!
Read our applying guide
on **page 52**

Maritime and Nautical

Fleetwood Nautical Campus

Career Opportunities

All aboard! Train for a rich, rewarding future at sea or ashore at one of the UK's leading nautical colleges for the maritime industry - Fleetwood Nautical Campus. There are plenty of exciting careers in the maritime sector to choose from! As a Deck or Engineering Officer you could travel the world and be in charge of operating and managing commercial ships. For shore-based jobs in ship management and other marine industries, you'll find varied and rewarding opportunities such as maritime law, surveying ships or training future seafarers.

Popular career routes (in the Merchant Navy)

- + Engineering Officer
- + Ratings
- + Deck Officer

Meet Charlie

Charlie Gellatly Level 3
Engineering, Shipping and
Maritime Operations



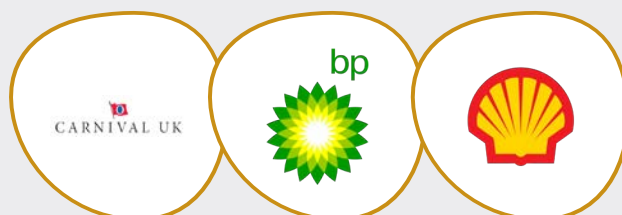
"I'm excited to be doing the Engineering course at Fleetwood Nautical College. I chose this course as I was told how good it was by a family member that had done it a few years ago. I'm hoping to find a sponsor and then proceed to go to sea with my company. After I finish my course I hope to get a job as an engineer on an oil tanker."

Industry-ready

B&FC has amazing industry placements with key employers such as Carnival UK, Shell, BP, Chiltern Maritime and Ship Safe Training Group Limited.

UK job facts

Jobs: **11,882**
Openings per year: **1,246**
Average Salary: **£35,300**



North West careers data courtesy of Northern Alliance and EMSI



Your options

Subjects Available

- + Deck Shipping and Maritime Operations
- + Engineering Shipping and Maritime Operations

Study Mode

- Level 3 Diploma
- Apprenticeships

Get a heads-up of life at sea
(student image: Andrew Hartnett)



Full mission ship's
bridge simulator



New £1.2m Marine
Engineering Centre



“With their excellent new facilities and experienced staff, Fleetwood Nautical Campus support and provide our officers and cadets with the knowledge and skills required for the maritime industry.”

Kristy Dawson, Carnival UK

See our full list
of courses at
blackpool.ac.uk/leavers

Applying is easy!
Read our applying guide
on **page 52**

Media Production, Film and Television

University Centre

Career Opportunities

Lights, camera, action! A career in media is fast paced, varied and exciting. At B&FC you'll work on live briefs and assignments in outstanding facilities including an industry standard TV studio and working theatre. Expert tutors will help you develop the technical and professional skills you need to succeed in this sector, with exciting careers available in journalism, production, publishing, radio and television. If you're curious about how media is made and want to produce your own, this course is for you.

Popular career routes

- + Online Content Producer
- + Audi-Visual Equipment Operator
- + TV or Film Camera Operator/Editor

Meet Matthew

Matthew Miller Production and Technology Level 3 Triple Diploma



"I chose B&FC because it's local and the quality of the course is great. I really enjoy the practical side of the course; it makes it a lot more relatable to industry jobs. My opinion was if I know I enjoy something I may as well get qualified in it. My long-term goal is to do sound or lighting in big organisations."

Industry-ready

B&FC has amazing industry placements with key Lancashire employers such as Blackpool Council, NHS England, Blackpool Coastal Housing, Lancashire Constabulary and Blackpool Carers Centre.

North West job facts

Jobs: **8,772**

Openings per year: **615**

Average Salary: **£38,700**

North West careers data courtesy of Northern Alliance and EMSI



100%
pass rate



Your options

Subjects Available

+ Media Production and Technology

Study Mode

● Level 3 Triple Diploma

A £150,000 TV studio, digital editing and filming facilities



Filming on location for music video production



Work on live briefs like a real film crew



“We are so happy to work with students from Blackpool and The Fylde College. They are the dancers, artists, producers, technicians, designers, and directors of the future.”

Lightpool Festival

See our full list of courses at
blackpool.ac.uk/leavers

Applying is easy!
Read our applying guide on **page 52**

Performing Arts and Music

University Centre

Career Opportunities

At B&FC we set the stage for you to hone your skills and develop your career in the arts. You'll benefit from our exceptional facilities including recording studios and a fully working theatre. As a performer, you'll need talent, dedication and determination to succeed. Musicians can either work alone or as part of a band, acting roles might range from live stage performances of the classics and community theatre, to soap operas, radio, TV and film parts.

Popular career routes

- + Actor
- + Musician
- + Director

Meet Kenny

Kenny Caton Level 3 Extended Diploma Music Performance and Production



"I love the fact that my course has modules designed specifically to prepare me for future education, it's helped me decide what I want to do after my second year of college. I'm planning on progressing on to a music degree at university, hopefully to become a live performer or producer."

Industry-ready

B&FC has amazing industry placements with key employers such as The Grand Theatre, Grundy Art Gallery, Winter Gardens, Up-Beat Rock Academy and MediaCityUK.

North West job facts

Jobs: **2,493**

Openings per year: **245**

Average Salary: **£39,300**

THE GRAND
THEATRE | BLACKPOOL

WV
WINTER
GARDENS
BLACKPOOL

MediaCityUK

North West careers data courtesy of Northern Alliance and EMSI

100%
pass rate



Your options

Subjects Available

- + Music Performance and Production
- + Performing Arts

Study Mode

- Level 2 Diploma
- Level 3 Triple Diploma

Pineapple Studios
workshop



Top tips from classical music
sensation G4's Lewis Raines



Acting students
on location



"The Grand Theatre is proud to
work in partnership with Blackpool
and The Fylde College."

The Grand Theatre, Blackpool

See our full list
of courses at
blackpool.ac.uk/leavers

Applying is easy!

Read our applying guide
on **page 52**

Public Services (Uniformed)

Bispham Campus

Career Opportunities

Duty calling? If you've got your sights set on a career in public service, our courses will prepare you for a variety of careers in this rewarding sector. From the emergency services to the armed forces and law enforcement, a wide variety of roles are available in the public services. As well as being personally fulfilling, you will make a real difference to society. Careers in this field are well paid and offer excellent opportunities for advancement.

Popular career routes

- + Police Officer
- + Army/Naval Officer
- + Firefighter

Industry-ready

B&FC has amazing industry placements with key employers such as Lancashire Constabulary, Army Dog Unit, 4th Battalion Duke of Lancaster Regiment, Royal Airforce and Royal Navy, including Royal Marines Commandos.

North West careers data courtesy of Northern Alliance and EMSI

Meet Yasmin

Meet Yasmin Brett

Level 3 Public Services



"B&FC stood out to me because of what they had to offer compared to other colleges. They offered more opportunities to go out and work closely with different people and do things like riot shield training and army training. Not only does it teach me the basic foundations that public services are built upon, it also provides me with key skills that will help me in future work-placements and life."

North West job facts

Jobs: **7,407**

Openings per year: **618**

Average Salary: **£39,500**





Your options

Subjects Available

- + Route to Policing
- + Uniformed Protective Services

Study Mode

- ☐ Level 2 Diploma
- ☐ Level 3 Diploma
- ☐ Level 3 Triple Diploma

Visit from police
dog unit



Army puts students
through their paces



Exciting activities with
National Citizen Service



“We have been working with Blackpool and The Fylde College for a number of years and our relationship gets stronger and stronger.”

Blackpool Football Club Community Trust

See our full list
of courses at
blackpool.ac.uk/leavers

Applying is easy!

Read our applying guide
on **page 52**

Career Opportunities

Science has never played a more important role in our world. If you enjoy exploring, experimenting and solving problems, a career in science could be for you. Our cutting-edge facilities and STEM Assured status show our commitment to providing a consistently high standard of training aligned with industry requirements. Scientists are among the most highly paid professionals, with rewards not just measured in money but in your impact on humans and the planet.

Popular career routes

- + Biomedical Scientist
- + Veterinary Nurse
- + Forensic Scientist

Meet Claire

Claire Nicholls

Level 3 Applied Science



“There is a good blend of theory and practical work, and lots of experiments. The support is brilliant – you are never stuck on a piece of work for long and you don’t feel any pressure. I also got to go on a really interesting placement at the hospital. I found it very interesting and was able to see exactly what went on in the wards.”

Industry-ready

B&FC has amazing industry placements with key Lancashire employers such as Blackpool Teaching Hospitals NHS Trust, Blackpool Zoo, Environment Agency, Victrex and Kommerling (HB Fuller).

North West job facts

Jobs: **50,929**

Openings per year: **3,474**

Average Salary: **£42,600**



North West careers data courtesy of Northern Alliance and EMSI



Your options

Subjects Available

- + Animal Care and Principles of Applied Science
- + Animal Science
- + Applied Science (Biomedical or Forensic and Analytical)
- + Science

Study Mode

- T Level
- Level 2 Diploma
- Level 3 Triple Diploma

Animal science
in practice



Students investigate
their personal genome



BTEC student of the
year Mica Mullender



“It is incredibly rewarding when we see students who have come to us on a work experience placement and then later, we employ them as our doctors, nurses, allied health professionals, healthcare scientists and support staff.”

Blackpool Teaching Hospitals NHS Foundation Trust

See our full list
of courses at
blackpool.ac.uk/leavers

Applying is easy!

Read our applying guide
on **page 52**

Sport, Leisure and Recreation

Bispham Campus

Career Opportunities

Achieve your goals and turn your passion for sport into a career you love. This sector offers exciting opportunities within areas such as coaching and performance analysis, physiotherapy, nutrition, sport and leisure centre management, event management and disability sport. The North West has a vibrant sports heritage, with Manchester's Sportcity home to national centres for squash and cycling and the region providing a quarter of England's Premier League football teams. Ready to kick-off your career?

Popular career routes

- + Gym or Leisure Manager
- + Sports Coach
- + Sport and Exercise Scientist

Meet Holly

Holly Whiting

Level 3 Sport



“ My dream job is to be a personal trainer, so this course is helping me to get more knowledge so that I have a good chance of achieving my dream. The practical and theory element is pretty much an equal balance, which is fun. I also got to do National Citizen Service with College which was really exciting!”

Industry-ready

B&FC has amazing industry placements with key Lancashire employers such as Fleetwood Town, The Gym, Tee Time Golf, Cybelé Cycle Hub and YMCA.

North West job facts

Jobs: **15,001**

Openings per year: **1,081**

Average Salary: **£24,890**

North West careers data courtesy of Northern Alliance and EMSI





Your options

Subjects Available

- + Fitness / Personal Trainer
- + Sport
- + Sport and Fitness

Study Mode

- ☒ Level 2 Diploma
- ☒ Level 3 Diploma

Amazing facilities in action:
3g all-weather pitch



Sports massage at the
London Marathon



Blackpool to Somme
charity bike-a-thon



"B&FC has been invaluable to the local community. The work they have done and to such a high standard has been fantastic over the last 12 months."

Layton Juniors FC

See our full list
of courses at
blackpool.ac.uk/leavers

Applying is easy!

Read our applying guide
on **page 52**

Travel and Tourism

Bispham Campus

Career Opportunities

Ready for your career to take off? If you've got a passion for travel why not turn it into a career and start going places. With B&FC as your starting destination you'll develop the skills and experience to fly high in the travel and tourism industry. If you enjoy working with people of all ages and backgrounds, have good organisational skills and enjoy exploring new places then our courses will help you arrive at your career destination.

Popular career routes

- + Resort Representative
- + Travel Influencer
- + Air Cabin Crew

Meet Kaitlyn

Kaitlyn Walshaw

Level 3 Travel and Tourism



"I chose B&FC because when I looked around the College it had a relaxed atmosphere and all the staff were helpful and nice. The travel and tourism course I'm studying includes practical elements I really enjoy like tour guiding which will include some trips. After College my plan is to apply for cabin crew."

Industry-ready

B&FC has amazing industry placements with key employers such as Thomas Cook, easyJet, Haven Holidays, Pleasure Beach and Merlin Entertainments.

North West job facts

Jobs: **4,651**

Openings per year: **508**

Average Salary: **£27,680**

easyJet

Haven



North West careers data courtesy of Northern Alliance and EMSI



Your options

Subjects Available

+ Tourism, Hospitality and Events

Study Mode

● Level 2 Diploma

● Level 3 Diploma

Practical skills sessions



Tour guide practice in Edinburgh



Annual Pleasure Beach trip



“The College is really in tune with what businesses need now for their workforce. We’re very lucky to have an ongoing relationship with the college. It’s ticking all the boxes.”

Merlin Entertainments

See our full list of courses at
blackpool.ac.uk/leavers

Applying is easy!

Read our applying guide on **page 52**



High-tech facilities

With all the latest technology and resources - the same as those used by industry - you'll be amazed at our high-tech facilities.



1. Industry-standard science laboratories
2. £150,000 TV studio, digital editing and filming facilities

3. Construction Skills Centre (largest construction training provider in the North West)
4. Fleetwood Nautical Campus

5. Simulated workplace environment
6. Superbly-equipped training kitchens



7. £10.5M Advanced Technology Centre (ATC) - Robotics and MOT testing facilities
8. Blackpool School of Arts (photography studios)

9. A range of virtual and augmented reality devices
10. Commercial training salons for Hair and Beauty Related Therapies

11. Up-to-the-minute resource centres with quiet zones and chill-out areas

Enjoy the journey

When you join B&FC, you're not just starting College, you're starting an exciting new adventure. Look forward to a relaxed, grown-up environment where you can enjoy good times, grow your confidence and gain valuable skills for the future.

Students' Union

Our College cares deeply about its students and always wants them to voice their opinions on college life. The Students' Union is comprised from students that are elected each year, giving them the opportunity to make real change at the College.

The Students' Union fronts a fantastic social events calendar filled with opportunities for you to get involved in social activism, charity work and overall fun events, this begins in September with our Freshers' Community Fête where you will be able to have fun and make new friends.

The Students' Union have their own website where you can find more information about the overall offer.

studentsunionblackpool.co.uk

Follow them on social media for further updates
[@blackpoolsu](https://twitter.com/blackpoolsu)

FE+

During each academic year you will work towards achieving a prestigious and employment focused award from B&FC. This valuable FE+ award will be earned over the academic year and be highly sought after by employers and can be taken into consideration by HE tutors when looking at applications for Higher Education courses.

The award is based on engagement with the personal development curriculum, employment, enrichment, and wider community activities.

It includes all enriching activities, charity work, sport, community, events, or competitions from inside the College and outside. The award will be measured on a termly basis and builds toward the annual Student of The Year Award in the summer term.

Students' Union -
shaping student life



Professionally
Qualified Careers
Team - help with
planning your future



The LRC - digital, research and information



Employability Coaches - events, workshops and services signposting



Student Support and Wellbeing - a range of personalised support



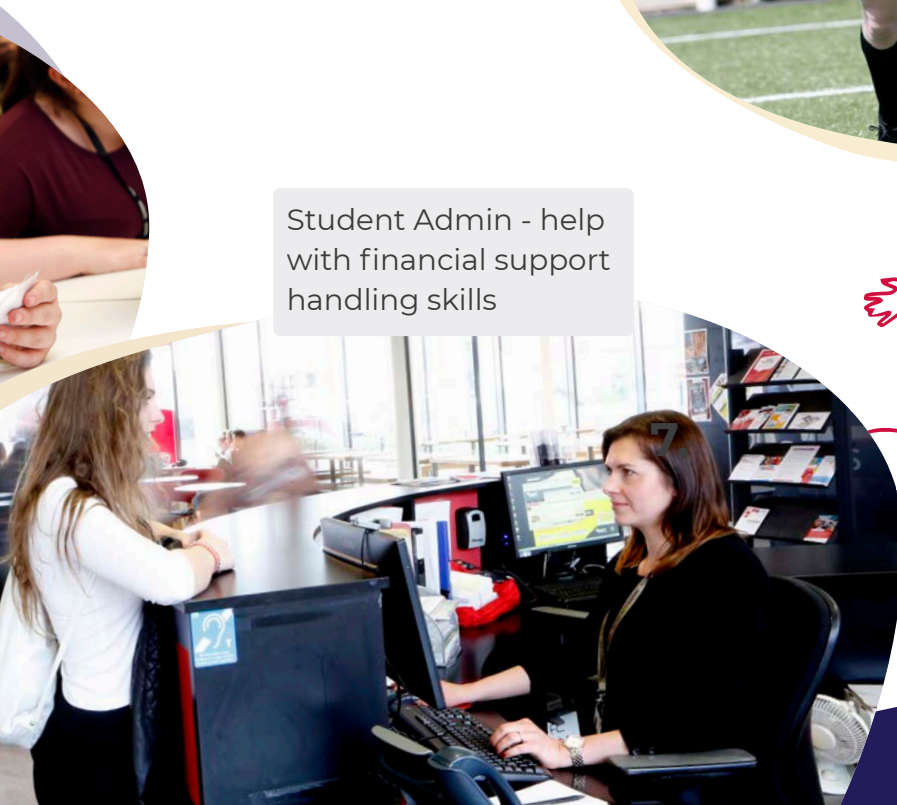
B&FC Community

We'll work closely with you, supporting you to progress towards a bright, rewarding future. Along with your subject tutors and personal progress tutor, there's a whole team of people who have your back. We call them Partners4Success.



Team B&FC - represent the College in one of our sports teams

Student Admin - help with financial support handling skills



Apply now

To secure your place in the B&FC community

Keep an eye out in year 11

Our School Liaison Team can support you to make the right decision about your next steps.

Find out more about how they can help you here: blackpool.ac.uk/liaison

1. Check us out

Come along to one of our open events where you can find out more about your chosen subject area and speak to an industry specialist about the route to your future career.

2. Complete an application

As soon as you've made your decision apply online by finding your chosen course and clicking 'Apply'.

3. Attend an interview

The next step is to attend an interview, which is your chance to chat with a tutor and ask them any questions about your chosen course. It also allows us to make sure you're on the right path to achieving your career goals.

4. Get confirmation of your place

Following your interview, we'll write to you with full details of your offer, including any entry requirements you'll need to meet.

5. Accept your place

You're nearly there! You just need to contact our Admissions Team to accept your place, providing your full name, date of birth, student ID (at the top of your offer letter) and course title.

6. Attend a taster session

Experience being part of the B&FC community, with workshops, careers discussions and enrichment activities.

7. Enrol

This is when you officially become a College student! We'll be in touch with everything you need to know nearer the time.

Applying for an apprenticeship?

Just follow the process opposite. If you don't have a relevant position, you'll need to register on GetMyFirstJob.co.uk and start to look for a suitable role. In the meantime, we'll support you to get work-ready and invite you to complete assessments in English, maths and ICT.

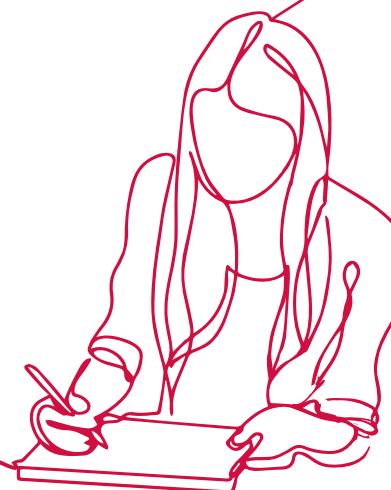
Stay in touch

At any stage of the application process, we're here to help and advise – just contact us. And if your contact details change, don't forget to let us know!

T 01253 504 322

E admissions@blackpool.ac.uk

Text 07860 064136



All the support you need

From the moment you arrive and throughout your course, our friendly staff and advisers provide expert information, advice and guidance to give you the best learning experience possible.

Getting Here

With our FREE or discounted 24/7 Blackpool Transport travel pass, students¹ get unlimited use of any Blackpool Transport bus or tram. We also offer a FREE bus service linking our Bispham Campus to Poulton-le-Fylde.

Money Matters

We offer a FREE healthy breakfast for everyone and a FREE lunch for eligible students¹. If you're in care or receiving certain benefits, you could get up to £1,200 Vulnerable Bursary as well as FREE meals.¹

Learning Support

If you have a disability (including a specific learning or mental health difficulty) we will help you to access the support needed to manage your studies as independently as possible. We also offer confidential counselling.

Career Planning

Our free careers service includes expert advice and resources to help with making career choices, applying to university and coaching to get you ready for employment.

Personalised Learning

Your own personal progress tutor will help you to settle in, keep you informed about upcoming events and provide ongoing support and guidance. Our friendly, expert tutors will support you to study onsite and online.

Young Parents

Through the government's Care to Learn scheme, full-time College-based students under 20 who have a child receive £160 per child per week towards childcare costs³.

Contact us

For information or for a financial support application form contact us on
T 01253 504 224 or **E** SSFunds@blackpool.ac.uk

You can also download the form at
blackpool.ac.uk/support/financial-support-16-18s

For advice about help with disabilities and learning difficulties, contact us on
T 01253 504 356 or **E** learningsupport@blackpool.ac.uk

¹Eligibility applies – go to blackpool.ac.uk/support/financial-support-16-18s for details



GT
Careers
Team



STAY LOCAL. GO FAR.

Did you know that at B&FC you can progress to one of a wide variety of degree-level courses, including higher and degree apprenticeships? And if you successfully complete a full level 3 qualification (and meet the entry criteria), we'll guarantee you a relevant place.¹



CHECK OUT THESE OTHER GREAT REASONS TO CHOOSE A B&FC DEGREE:

- + A UK top 20 Lancaster University degree⁴
- + Teaching to fit around your life (only 1-2 days a week timetabled sessions)
- + Smaller class sizes (average 15-20 students)
- + Over 1,800 partner employers feed into course design and delivery
- + Industry specialist tutors who keep their expertise up-to-date
- + Dedicated learning mentors
- + A dedicated University Centre and Advanced Technology Centre

SAVE MONEY WHEN YOU STAY LOCAL

COMPETITIVE FEES
WITH NOTHING TO
PAY UPFRONT

UP TO £500 WITH
B&FC'S ADVANTAGE
BURSARY⁵

UP TO £1,000 A YEAR
WITH B&FC'S ACCESS
SCHOLARSHIP⁵

FREE TUITION WITH
B&FC'S OPPORTUNITY
SCHOLARSHIP^{5/6}

**WITH A LANCASTER UNIVERSITY
DEGREE RIGHT HERE IN BLACKPOOL.**

Degrees awarded by



*Meet
Elise...*

ELISE STROTHER

FOUNDATION DEGREE BUSINESS MANAGEMENT



Elise Strother made the leap from level 3 to degree at B&FC and has her sights set on being a business consultant or running her own beauty business.

“I’m really enjoying it. A lot of it has fed in from the level 3 programme – we’re just going a bit more in depth so it’s not overwhelming.

There are just 20 in my class so it’s a really small group and it’s so much better because you have more discussions – it’s not like there are hundreds of you in a lecture theatre just being spoken at – there are more group activities to learn things.

And my timetable is condensed to just one day, which means I can still work and earn money as well as getting my studies done.”

**FIND OUT MORE AND SEE OUR FULL COURSE LISTING AT
[BLACKPOOL.AC.UK/HIGHEREDUCATION](https://blackpool.ac.uk/highereducation)**

¹Terms and conditions apply ²Graduate Outcomes (LEO) 2018/19 ³DLHE Survey and graduate-jobs.com, which estimates the average starting salary for graduates is £19,000-£22,000 ⁴The Complete University Guide League Tables 2022 ⁵Eligibility applies ⁶A scholarship that supports up to five new undergraduate students from Black, Asian and Minority Ethnic backgrounds

General Enquiries

T 01253 352 352

Course Enquiries

T 01253 504 343

blackpool.ac.uk



**In the top 3%
of colleges in
England for
school leaver
success***

That's a lot of
high achievers!

*National achievement rate tables (NARTs) from the Department for Education & Education and Skills Funding Agency 2018/19



**B&FC, Bispham Campus, Ashfield
Road, Blackpool, FY2 0HB**

What's on and when

Open Events

Saturday 8 January 2022

10:30am–2:30pm

Wednesday 9 March 2022

4.30–7pm

Saturday 18 June 2022

10.30am–2.30pm

Meet the Experts

Wednesday 8 December 2021

5–7pm

Wednesday 9 February 2022

5–7pm

Wednesday 6 April 2022

5–7pm

Wednesday 11 May 2022

5–7pm

Applicant Taster Sessions

Wednesday 8 December 2021

4–6pm

Wednesday 9 February 2022

4–6pm

Wednesday 6 April 2022

4–6pm

Wednesday 11 May 2022

4–6pm

Go to Bispham Campus or University Centre - check online for where to go and how to get there: blackpool.ac.uk/events

Maritime and Nautical

Thursday 18 November 2021

1.30–4.30pm

Saturday 22 January 2022

10.30am–2.30pm

These are held separately at the Fleetwood Nautical Campus - check online for how to get there: fleetwoodnautical.blackpool.ac.uk